

# NEXGO UN10

Version 1.0 Issued May 2026

[NEXGOGLOBAL.COM](https://nexusglobal.com)


© 2026 NEXGO | The information contained in this document is subject to change without notice. All pictures shown are for illustration purposes only, actual product and software may vary. NEXGO and the NEXGO logo are either trademarks or registered trademarks of NEXGO in China and/or other countries. All other trademarks or brand names are the properties of their respective holders.



# UN10

Compact Unattended  
Terminal





The UN10 is engineered for ultimate flexibility and efficiency. Powered by a high-performance Qualcomm chipset and Android 14, it delivers fast, secure, and stable operations. While its rugged, compact design guarantees reliability in demanding environments, its versatile connectivity and multi-payment support ensure seamless integration into any self-service scenario.

## Compact

Flexible and convenient installation

## Reliable

Undeterred by wind, rain, ice and snow

## Secure

PCI PTS 7.X



### Auto Adaptive Brightness

Automatically adjusts screen brightness based on ambient light for a more comfortable display experience.

### Flashing light prompt

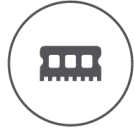
Intuitive transaction LED lights deliver a smoother, more effortless self-service transaction experience.

# Excellent User Experience

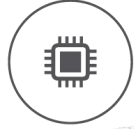
We are committed to delivering an outstanding user experience, starting with every detail.



# Outstanding Performance



Qualcomm Quad-core  
Cortex-A53, 2.0GHz



2GB RAM +16GB ROM



Android 14



# Reliable, Durable, High Protection

Stable and reliable even in extreme outdoor conditions, resistant to wind, rain, snow and ice.



IP66 & IP65



-20°C to 70°C



IK10&IK09\*

\* IK10 - NEXGO Laboratory Test Data

 **NEXGO**

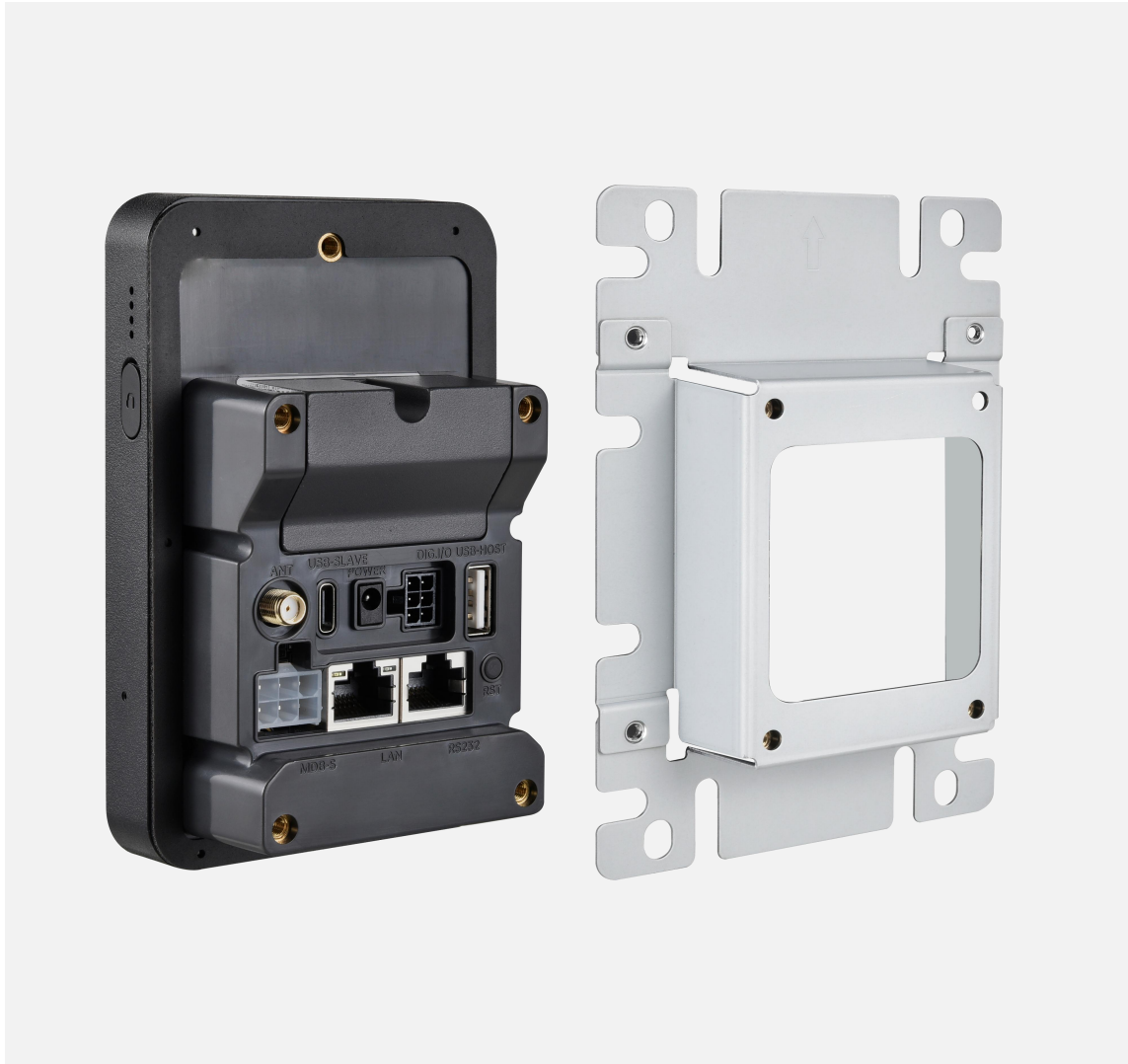
# Ultra-Low Power

Featuring an ultra-low energy design, the device supports low-power mode and fast wake-up. Environmentally friendly, it is ideal for solar-powered self-service applications.



Ultra-low energy consumption,  
green and environmentally friendly





# Easy to Install

Multiple installation methods to suit various scenarios



Standard Installation



Flush Installation



Separated Installation



Surface Installation

# Versatile

Versatile connectivity  
Versatile interfaces  
Versatile power supply  
UN10 enables seamless integration and deployment in a wide range of industries.



Ethernet



Bluetooth 5.0



Wi-Fi



4G



LAN



MDB



RS232



USB Type-C

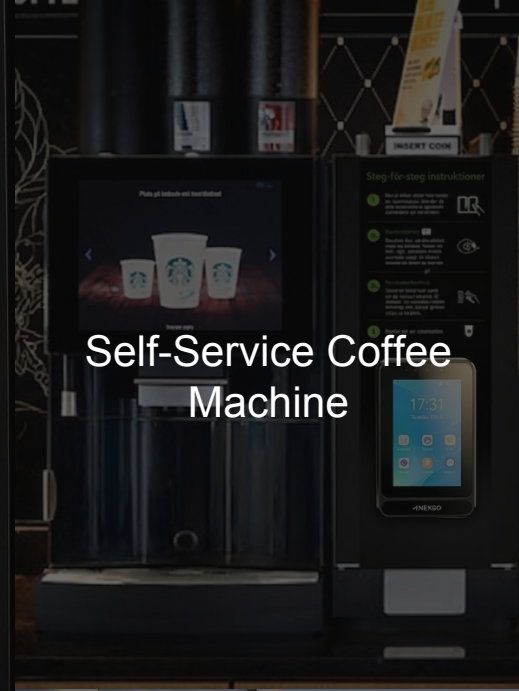




EV Charging



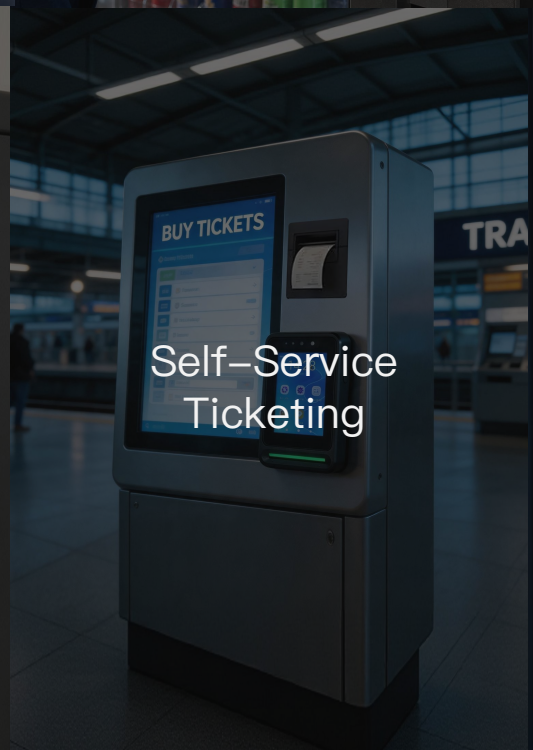
Vending Machines



Self-Service Coffee Machine



Self-Service Laundry



Self-Service Ticketing



Self-Service Ticketing

# Scenarios

The security, stability, and premium performance that the UN10 provides are applicable in a variety of scenarios, including EV charging, self-service shopping, laundry, vending machines, gas stations, parking lots, ticketing, and so on.

# More Configurations

UN10



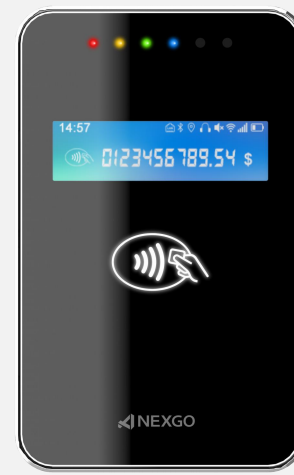
3.5 inch touchscreen  
Payment : NFC + QR  
With PIN function

UN10P



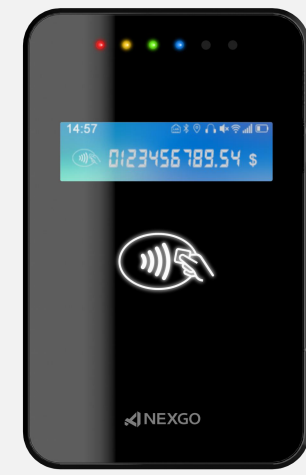
3.5 inch touchscreen  
Payment : IC + NFC + QR  
With PIN function

UN10R



2.3 inch TFT LCD  
Payment : NFC  
Without PIN function

UN10RS



(Detachable version)

# Payment Methods

The clear indicator lights will guide users to settle the payment even in the dark.



Contactless/NFC



IC Cards



Merchant-presented  
QR code payment



Customer-presented  
QR code payment

# UN10 series Specification

	UN10	UN10P	UN10R	UN10RS
<b>OS</b>	Android 14			
<b>Processor</b>	Qualcomm Quad-core Cortex-A53, 2.0GHz			
<b>Display</b>	3.5" HVGA (320 × 480) Color LCD, Capacitive Touch		2.36" (76 × 284) Color LCD	
<b>Memory</b>	2GB RAM +16GB ROM			
<b>Communication</b>	4G/3G/2G+WiFi 2.4GHz/5GHz,802.11 a/b/g/n/ac +BT5.0 (Optional: Ethernet 10/100)			
<b>Positioning</b>	GPS, GLONASS, Galileo, BeiDou			
<b>Card Readers</b>	Contactless Cards	Chip Cards+Contactless Cards	Contactless Cards	Contactless Cards
<b>Card Slots</b>	1 × SIM + 2 × SAM (Optional: 1 × SIM + 2 × SAM + eSIM) (Optional: 1 × SIM + 4 × SAM)			1 × SIM + eSIM (Optional: eSIM + 1 × SAM)
<b>Camera</b>	Front: 2 MP, FF		No	No
<b>Audio</b>	1 × Microphone, 1 × Speaker, 1 × Audio Jack			
<b>Sensor</b>	Ambient Light Sensor, Infrared Sensor			
<b>Ports</b>	1 × USB Type-C (Slave), 1 × USB Type-A (Host), 1 × MDB Slave, 1 × RS232(RJ45), 1 × Digital I/O, 1 × LAN (RJ45) , 1x DC Power Port			1 × USB Type-C (Slave), 1 × MDB Slave, 1 × LAN (RJ45) , 1 × DC Power Port
<b>Protection Ratings</b>	IP66 / IK10	IP65 / IK10	IP66 / IK09	
<b>Power supply</b>	DC 5V/3A Via USB-C or DC Power Port, DC 7V-48V Via MDB			
<b>Physical</b>	75.8mm (L) x 121.8mm (W) x 48mm (H)			75.8mm (L) x 121.8mm (W) x 24mm (H)
<b>Accessories</b>	Mounting Bracket, External 4G Antenna (Optional: Power Adapter)			
<b>Certifications</b>	PCI 7.x, EMV L1, EMV CL1,Quickpass, Paypass, Paywave, TQM, JCB, Discover, AMEX, IP66, IK09, CE, FCC, RoHS			
<b>Environmental</b>	Operating Temperature : -20°C to 70°C Storage Temperature : -30°C to 80°C Relative Humidity : 5% to 95%(Non-Condensing)		Operating Temperature : -20°C to 60°C Storage Temperature : -30°C to 80°C Relative Humidity : 5% to 95%(Non-Condensing)	

THANK YOU!

[NEXGOGLOBAL.COM](https://nexusglobal.com)

© 2026 NEXGO

