

NEXGO G2

Version 5.1 Issued October 2022

[NEXGOGLOBAL.COM](https://nexusglobal.com)

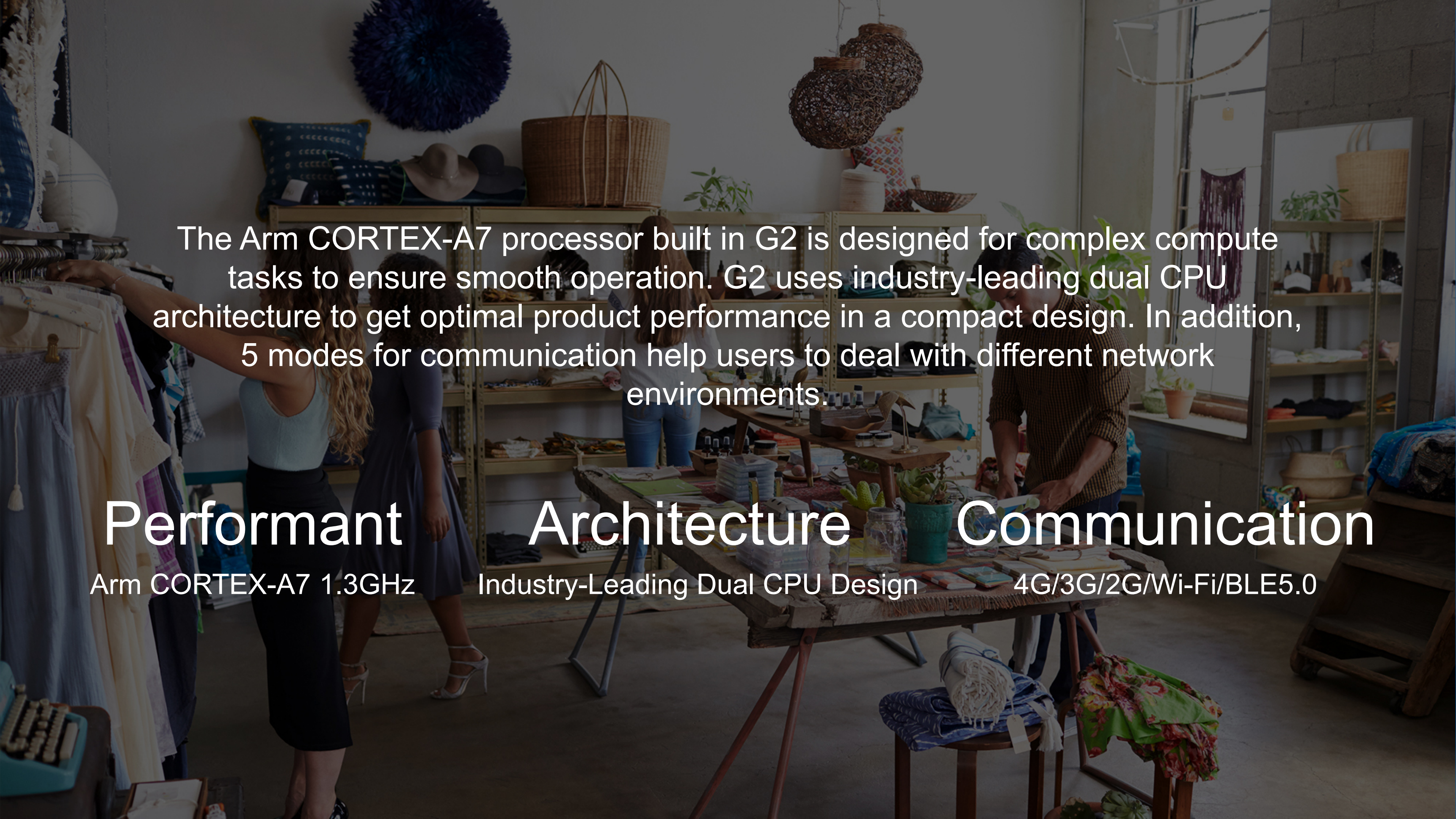
© 2022 NEXGO | The information contained in this document is subject to change without notice. All pictures shown are for illustration purpose only, actual product and software may vary. NEXGO and the NEXGO logo are either trademarks or registered trademarks of NEXGO in the China and/or other countries. All other trademarks or brand names are the properties of their respective holders.





G2

Performant
Portable POS Terminal

A woman with long blonde hair, wearing a light blue sleeveless top and a dark skirt, is browsing through a rack of clothes in a boutique. The boutique has wooden shelves filled with various items like hats, baskets, and plants. A man in a brown sweater is working at a wooden table in the background. The scene is dimly lit, with a warm, cozy atmosphere.

The Arm CORTEX-A7 processor built in G2 is designed for complex compute tasks to ensure smooth operation. G2 uses industry-leading dual CPU architecture to get optimal product performance in a compact design. In addition, 5 modes for communication help users to deal with different network environments.

Performant

Arm CORTEX-A7 1.3GHz

Architecture

Industry-Leading Dual CPU Design

Communication

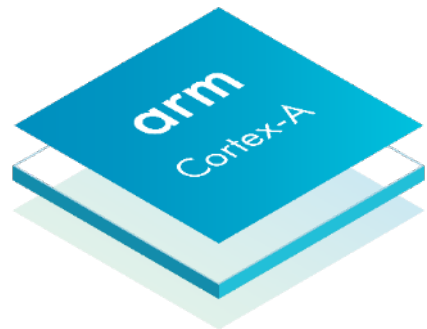
4G/3G/2G/Wi-Fi/BLE5.0

Processor and Memory

G2 uses Arm CORTEX-A7 with 256MB Flash and 256MB RAM, bringing you an smooth operation experience.

Arm CORTEX-A7

1.3GHz



Memory

256MB Flash+256MB RAM





Leading Dual CPU Architecture

Industry-leading architecture enables G2 to enhance product performance in a compact design.

Use G2 Anywhere

G2 adopts **Qualcomm** chipsets and powerful communication module, to ensure fast and stable communication and strong network adaptability.



4G



3G



2G



Wi-Fi



BLE5.0



* BLE is Bluetooth Low Energy

A Higher Level of Security

NEXGO's newest security system is used in G2, which greatly improves the safety level. It supports TMS and remote keys, also effectively protects G2 from illegal dismantling and data theft.

PCI5.X Approved

Valid until 2026



Power-Efficient

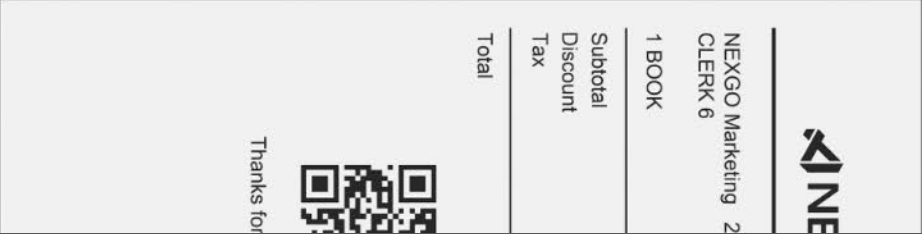
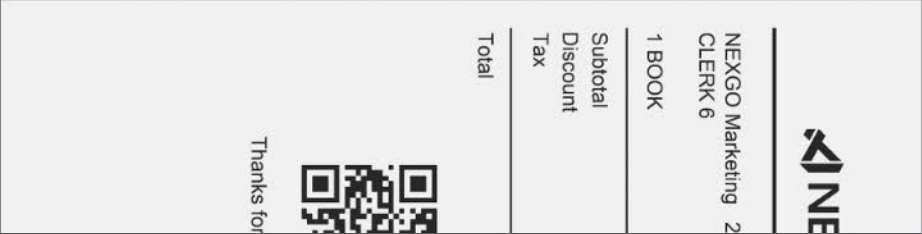
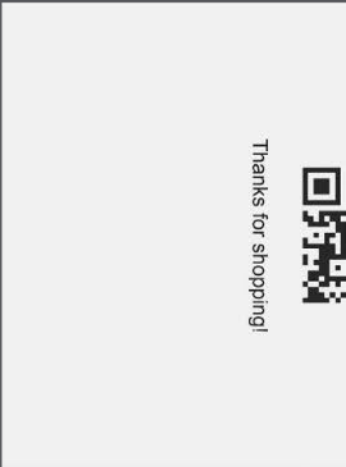
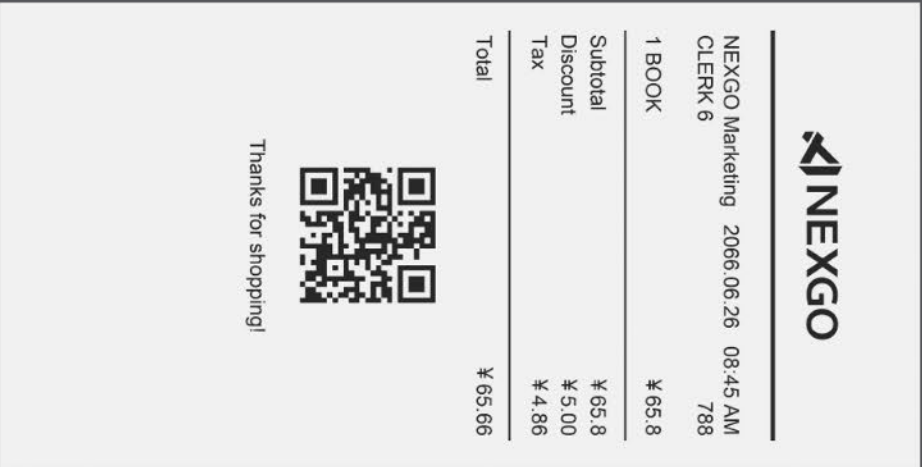
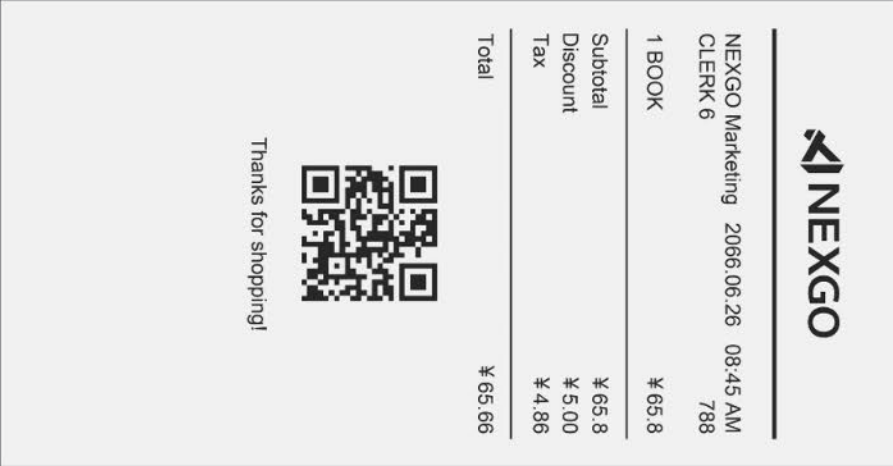
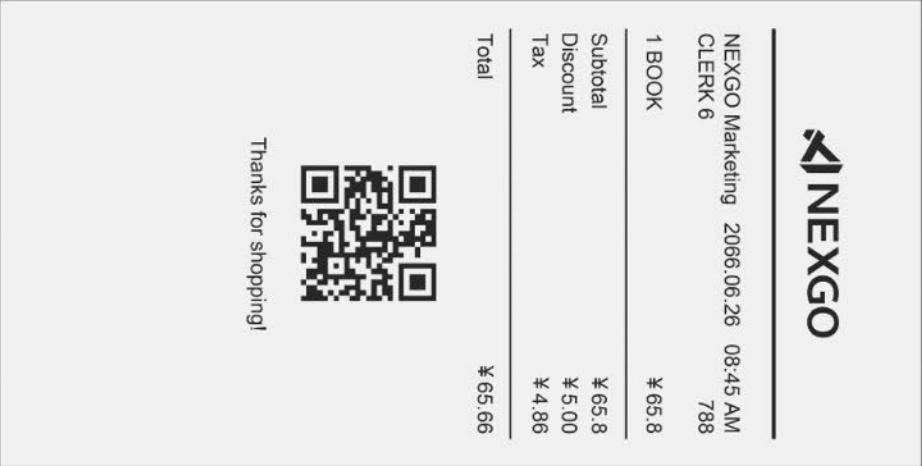
The power performance of G2 is outstanding, its battery can stand by for up to 260+ hours or print 600+ receipts per charge.



260+ Hours



600+ Receipts





Certificato di esame UE del tipo
EU-type examination certificate
n. ECM 20 ATEX-B QW95
Rilasciato ai sensi della direttiva 2014/34/UE – Allegato III - Modulo B
Issued according to 2014/34/EU Directive – Annex III - Module B

Richiedente
Applicant
Ragione Sociale Shenzhen Xinguodu Technology Co., Ltd.
Company Name
Indirizzo 178 JinSong Mansion, Terra Industrial & Trade Park Chegongmiao, Futian District, Shenzhen, Guangdong, China
Address
Luogo di produzione 178 JinSong Mansion, Terra Industrial & Trade Park Chegongmiao, Futian District, Shenzhen, Guangdong, China
Place of production

Apparecchiatura POS TERMINAL
Equipment Model Name: G2
Modo di protezione II 3G Ex ic IIB T4 Gc
Type of protection

Questa apparecchiatura o sistema di protezione e le sue This equipment or protective system and any acceptable variation
eventuali varianti accettate sono descritte nel presente sherto are described in this Certificate and its Annex.
Certificato e nell'allegato dello stesso.

L'ECM, Organismo Notificato n° 1282 in conformità all'art. 17 ECM, Notified Body No. 1282 in accordance with Article 17 of Directive
della Direttiva 2014/34/UE del Parlamento europeo e del 2014/34/EU of the European Parliament and of the Council of 26
Consiglio del 26 febbraio 2014, certifica che questa February 2014, certifies that this equipment or protective system was
apparecchiatura o sistema di protezione verificata secondo la tested according to the procedure set out in Annex III, Module B,
procedura di cui all'allegato III, Modulo B, è conforme ai requisiti complies with the essential health and safety requirements for the
essenziali di sicurezza e salute per il progetto e la costruzione di project and construction of equipment and protective systems intended
apparecchiature e sistemi di protezione destinati ad essere for use in potentially explosive atmospheres given in Annex II of the
utilizzati in atmosfere potenzialmente esplosive, definiti Directive.
nell'allegato II della Direttiva.
Le verifiche ed i risultati di prova sono registrati nel rapporto a The examination and test results are recorded in confidential report no.
carattere riservato n° TH20EWR-4455. TH20EWR-4455.

I requisiti essenziali di sicurezza e salute sono assicurati dalla The essential health and safety requirements are assured by compliance
rispondenza alle Norme applicate: EN IEC 60079-0:2018, EN with applied Standard: EN IEC 60079-0:2018, EN 60079-11:2012,
60079-11:2012.

Questo Certificato di esame UE del tipo è relativo soltanto al This EU-type examination certificate relates only to the design,
progetto, all'esame ed alle prove dell'apparecchiatura o sistema examination and tests specified equipment in accordance with Directive
di protezione specificato in accordo con la Direttiva 2014/34/UE. 2014/34/EU. Further requirements of the Directive shall be applied to
Ulteriori requisiti di questa Direttiva si applicano al processo di the manufacturing process and supply condition: these requirements are
produzione e fornitura dell'apparecchiatura o sistema di not covered by this certificate.
protezione: questi requisiti non sono oggetto del presente
certificato.

L'apparecchiatura o il sistema di protezione deve riportare i seguenti contrassegni:
The equipment shall be marked with the following symbols:  II 3G Ex ic IIB T4 Gc

Valsamoggia (BO)
Data - Date 16/06/2020
Timbro 
Scadenza - Expiry date 15/06/2025

Firma autorizzata
Authorized signature

(Amanda Payne (Deputy Manager))

Questo certificato, incluso l'allegato, può essere riprodotto solo integralmente e senza alcuna variazione.
This certificate, annex included, can only be reproduced in its entirety and without any change.

Pag. 1 di 1

Ente Certificazione Macchine srl
Via Co' Bella 243 – Loc. Castello di Serravalle – 40053 Valsamoggia (BO)
☎ +39 0516705141 📠 +39 0516705156 ✉ ecm@entecerma.it www.entecerma.it

ATEX Certified

G2 can be safely and reliably used in hazardous workplaces, such as gas stations, chemical industry and petrochemical industry.

It is proved not to be a source of ignition or explosion under potentially explosive atmospheres, and it can withstand a certain extent of blast and heat without causing a secondary explosion or fire.

Payment Methods

G2 accepts payments of magnetic stripe cards, IC cards and contactless/NFC.



Magnetic Stripe Cards



IC Cards



Contactless/NFC

Certifications



G2 Portable POS Terminal

Operating System Linux	Printer High Speed Thermal Printer Paper Roll Width : 58mm, Diameter: 40mm	Battery 3.7V/2600mAh
Processor Arm CORTEX-A7 1.3GHz	Card Readers Magstripe Cards : Track 1/2/3, Bi-Directional, ISO7811 Smart Cards : EMV L1 & L2 Approved Contactless Cards : Type A/B, EMV L1 & L2, Paypass, PayWave and Amex Approved	Environmental Operating Temperature : 0° C to 50° C Storage Temperature : -20° C to 60° C Relative Humidity : 5% to 95%(Non-Condensing)
Memory 256MB Flash+256MB RAM	Peripheral Ports 1 x Micro-USB 1 x PSAM, 1 x SIM	Physical 165mm L x 78mm W x 56mm H 340g (Battery Included)
Display 2.4" TFT QVGA (320 x 240) Color Screen with Adjustable Backlight Resistive Touchscreen E-signature Supported	Communication 4G/3G/2G Wi-Fi, 2.4G 802.11b/g/n90 (Optional) BLE5.0 (Optional)	Voltage Input : 100 - 240V, 50-60Hz, 0.3A Output : 5V/1A
Keypad 10 Numeric Keys, 9 Function Keys Dustproof Built-in Password Keyboard	Audio Buzzer	Certifications PCI5.X, CE, EMV L1/L2, EMV CL L1, Paypass, PayWave, Amex, ATEX, etc.

THANK YOU!

NEXGOGLOBAL.COM

© 2022 NEXGO

