

NEXGO EF910

Version 5.1 Issued March 2023

[NEXGOGLOBAL.COM](https://nexusglobal.com)

© 2023 NEXGO | The information contained in this document is subject to change without notice. All pictures shown are for illustration purpose only, actual product and software may vary. NEXGO and the NEXGO logo are either trademarks or registered trademarks of NEXGO in the China and/or other countries. All other trademarks or brand names are the properties of their respective holders.



EF910

Smart ECR



EF910 is a smart ECR powered by Android system with quad-core processor. Its elegant design provides excellent user experience. EF910 smart ECR can be widely used in retail, food, hotel, super market, and healthcare industries.

Performance

Quad-core processor

Elegant Design

Slender and streamlined

Rich Interfaces

Available for external devices

Excellent Performance

CPU:

Quad-core Cortex-A55, 2.0G Hz

Memory space:

2GB RAM + 16GB ROM

4GB RAM + 32GB/64GB ROM (Optional)

Micro SD Card Supported(Up to 128GB)

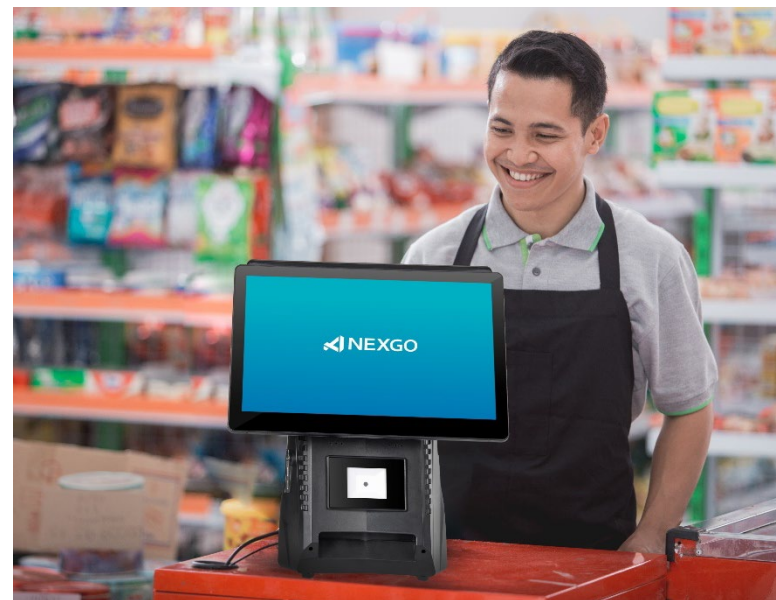
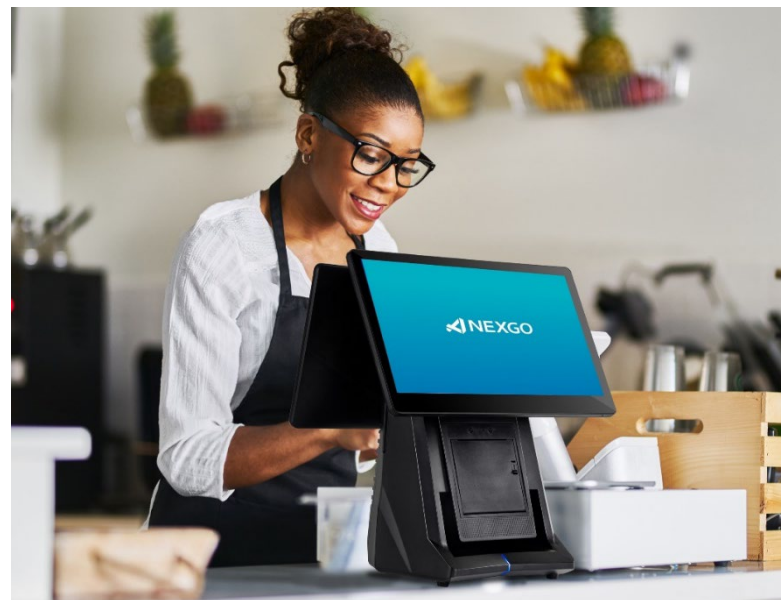
Display:

Main: 15.6" 1920*1080 capacitive touch screen

Secondary: 15.6" 1920*1080 (Optional)

8-digit 7-Segment Led Display (Optional)

Multiple Modes for Multiple Scenarios



Option 1:

Main screen 15.6" (For Cashier) + Secondary screen 15.6" (For Customer)

Including Printer

Option 2:

Single screen 15.6" + 8 Digit LED Display



Optional Modules

- Touch Screen
- 4G Module
- Scanner Module

Excellent Printing Efficiency

With a print speed up to 150mm/s, the embedded auto cutter of EF910 helps improve printing efficiency and reduce manual operation.

Printing method: Row thermal sensitivity

Print density: 8 points/mm

Effective print width: 72mm

Row width: 3.75mm



Specification for EF910

Processor Quad-Core Processor Cortex-A55 2.0GHz	Operating System Android 11	Adapter Input:100-240V Output:12V-5A	Environmental Operating Temperature: -10°C to 50°C Storage Temperature: -20°C to 60°C Relative Humidity: 30% to 95%
Memory 2GB RAM + 16GB ROM 4GB RAM + 32GB/64GB ROM (Optional) Micro SD Card Supported(Up to 128GB)	Communication Ethernet 1000M Wi-Fi 802.11b/g/n 2.4G Bluetooth 4.2	Certification CE,3C	
Display Main: 15.6” 1920*1080 capacitive touch screen Secondary:15.6” 1920*1080 (Optional) 8-digit 7-Segment Led Display (Optional)	Printer Print Width: 80mm Paper Diameter: 58mm High Speed Thermal Printer Support Automatic Cutter	Peripheral Ports 5 x TYPE-A USB 1 x Micro USB OTG 1 x RJ45, LAN 1 x RJ11, 1 x SD Card 1 x DC, 1 x Audio Jack 3.5mm 5 x UART (1 for DB9)	
Button 1 x Power Button	Size 430*295*490mm	Audio Speaker: 2W ((Optional)	

THANK YOU!

NEXGOGLOBAL.COM

© 2023 NEXGO

